

Figure 1. Electrode Locations. 1A. Location of Active and Reference Electrodes for Standard Responses. The active electrode is located along the midline at Oz. The reference electrode is located at location Fz. The subscript z indicates a

midline position. 1B. The locations of the lateral active electrodes, O₁, O₂, PO₇, and PO₈ are indicated along with the midline active electrode location, O_z.

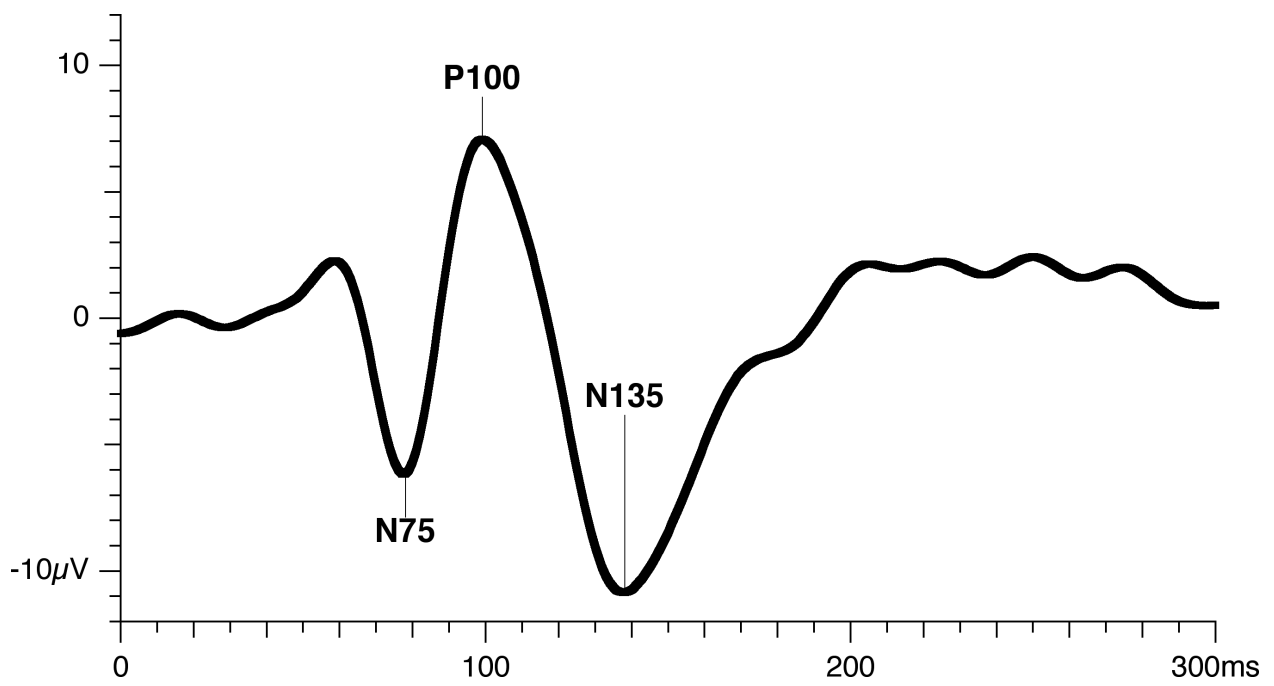


Figure 2: A normal pattern reversal VEP.

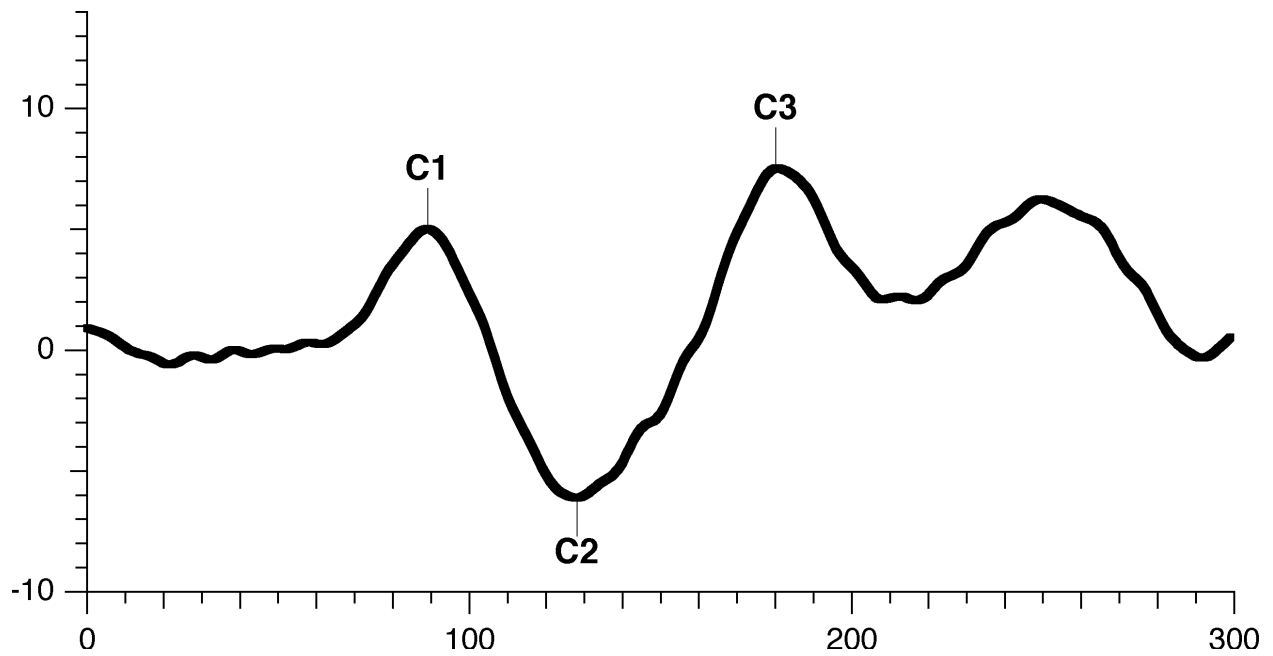


Figure 3: A normal pattern onset/offset VEP. Note that with a 300 ms sweep only the pattern onset response is recorded.

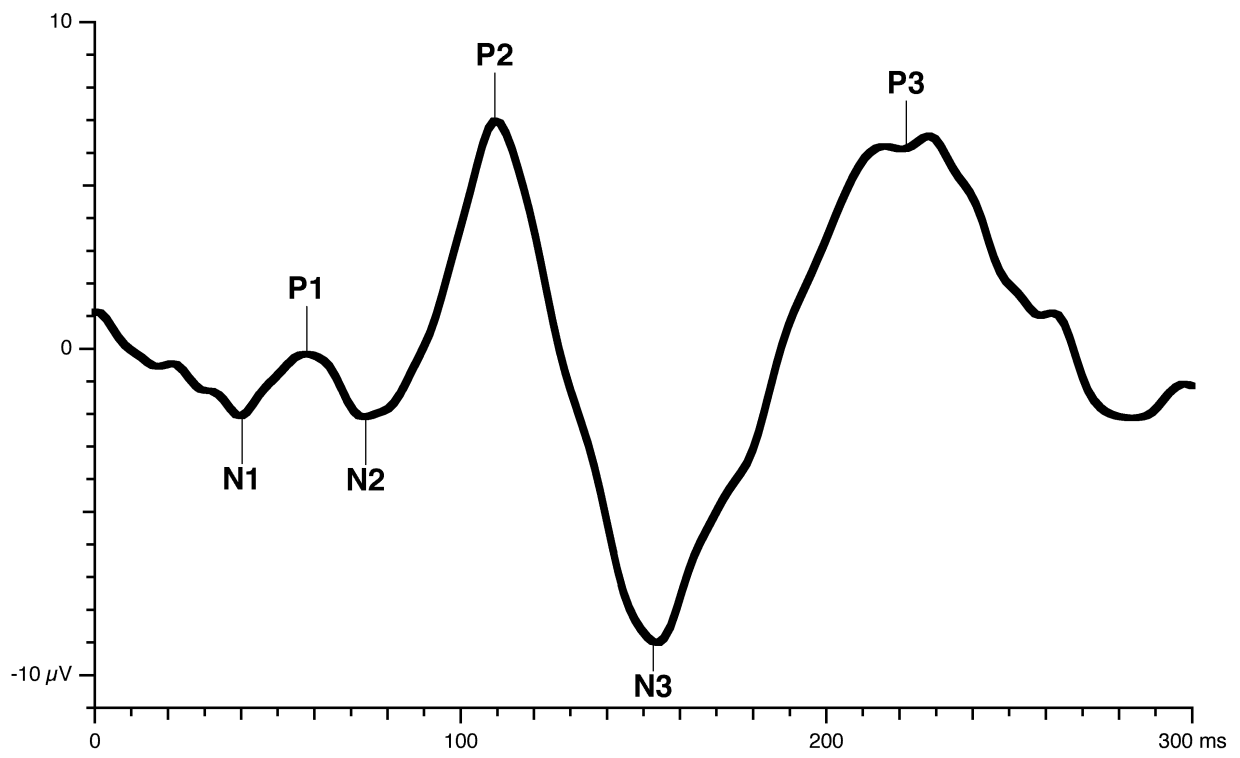


Figure 4: A normal flash VEP.